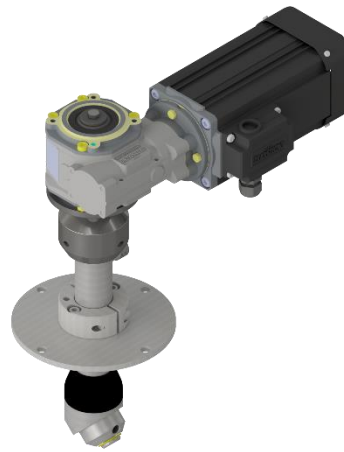


Internal tank cleaner with electric motor

- Cleaning head RW
- Spray coverage 270°
- Shaft length 180 mm
- Electric motor
- Speed 14 rpm
- Maximum 250 bar
- Maximum 50 l/m
- Mounting flange diameter 162mm
- STAINLESS STEEL 316L / VITON

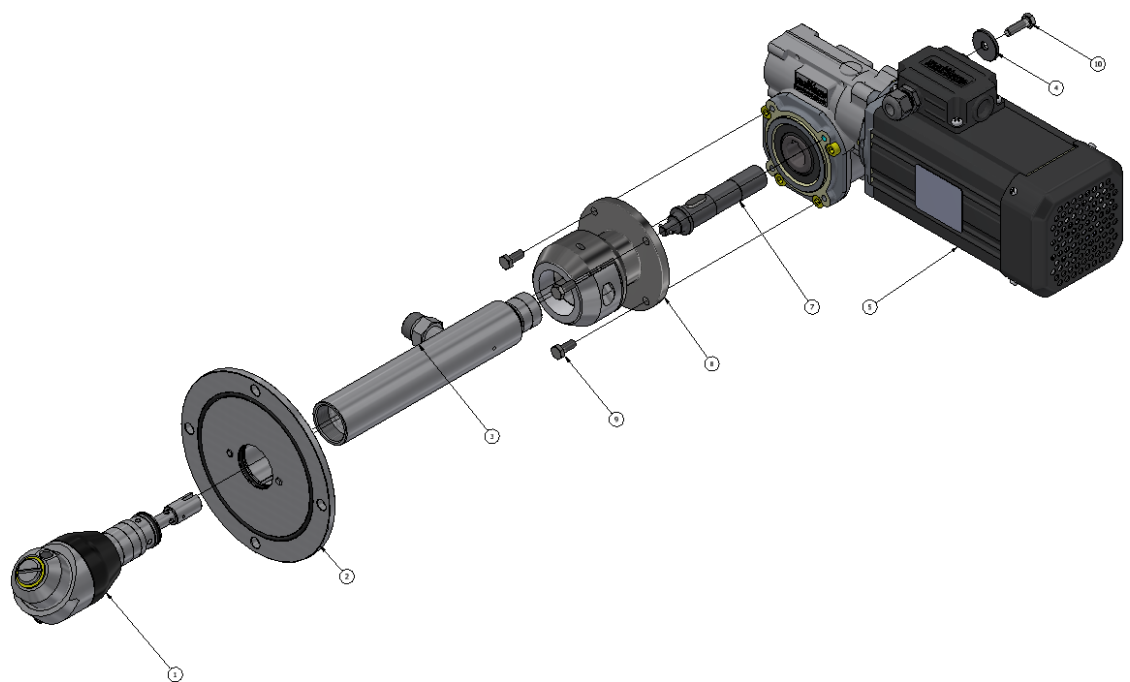


Construction

Components The MixerWasher PR.000.071 internal tank cleaner consists of a cleaning head, an electric motor, a flange and a connection pipe.

The electric motor generates the rotary motion. The connecting tube transmits this motion to the cleaning head for a 270° spray pattern. The high pressure water is connected to the connecting pipe for transmission to the cleaning head. The cleaning head houses the cleaning nozzles.

In the event of servicing, this modular design means that individual elements can be replaced and quickly returned to service.



- | | | | |
|----|--|---|-------------------------|
| 1 | Cleaning head combination RW | 2 | Mounting flange Ø162 mm |
| 3 | Connecting pipe 180 mm with connection | 4 | Disc D25 |
| 5 | Gear motor 230/400V50Hz/460V60Hz | 7 | Motor drive shaft |
| 8 | Motor flange | 9 | Fixing screw M6 |
| 10 | Mating screw M6 | | |

Features

- Functionality**
- Rotary motion is generated by an electric geared motor and transmitted to the cleaning head via a motor drive shaft and a drive shaft.
 - Rotation of the 45° inclined cleaning head provides 270° cleaning jet coverage
 - Only the cleaning head with connecting pipe is inserted into the container
- Adjustability**
- Speed and torque matched to cleaning requirements
 - Mounting flange can be moved on the connection pipe and clamped in the correct position

- Reliability**
- Designed for durability and easy to maintenance
 - Complies with the specified guidelines and standards
- Variants**
- Customer made products are available on request

Specifications

Drive	electric	230 – 400 V / 50 Hz 275 – 480 V / 60 Hz
Electrical data	Pole	Power
	2 / 3 phase	Pn [Kw]
	230–400 V/50 Hz	0.09
	275–480 V/60 Hz	0.11
		Torque
		Mn [Nm]
		28
		28
		Speed
		rpm
		14
		14
		Current
		In [A]
		0.45 @400V
		0.44 @460V
Hydraulic data	Pressure minimal	80 bar
	Maximum working pressure	250 bar
	Working pressure	150 bar
	Minimal flow rate	10 l/min
	Maximum flow rate	50 l/min
	Spray coverage	270°
	Temperature maximum	120 °C
	Connection high pressure water	Parker EO 24° M20x1.5 1/2" (option) M22x1.5 (option)
	Nozzles	2 pieces 0° 1/8"
Mechanical data	Velocity	14 rpm
	Cycle complete	4.1 min 55 revolutions
Material	Cleaning-head	AISI 316L STAINLESS STEEL
	Connecting pipe	AISI 316L STAINLESS STEEL
	Seals	FPM Viton
Einbaudaten	Installation opening	larger Ø68 mm larger Ø84 mm, automatic retraction/extension
Logistical data	Dimensions	370 x 332 x 189 mm
	Weight	9.9 kg
Approvals	EC / UL	

Safety


- This internal container cleaner is only suitable for internal cleaning of production, storage and transport containers that can be treated with a high pressure water jet with cleaning solution.
- The appliance is designed for use only with fresh water and detergents expressly approved by the manufacturer (see www.moog.ch). It is essential that the operating conditions and the limits of performance indicated in the technical data sheet are complied with.
- This equipment is a technical work tool and is not intended for private use. To ensure proper use, be sure to transport and store properly.

Installationshinweise

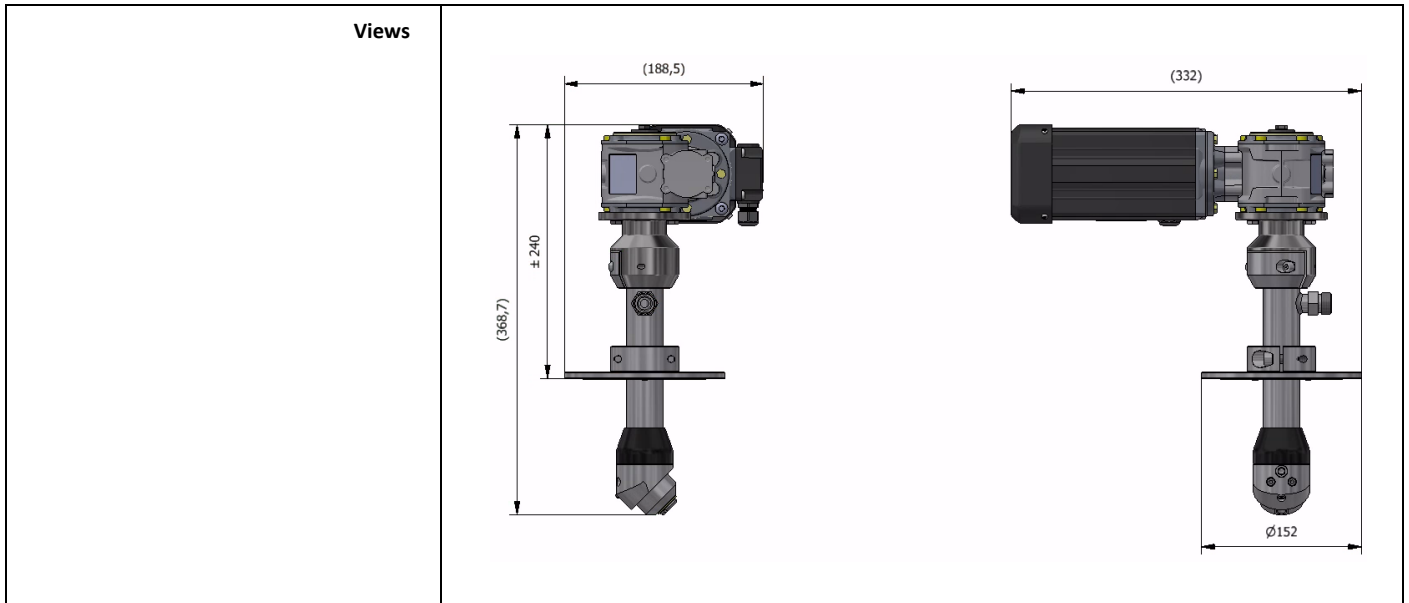
Clean the nozzles with compressed air or with a very thin metal rod if the dirt is stuck. If necessary,

Maintenance replace the nozzles with a similar type of nozzle with the same nozzle opening.
 Service intervals will vary depending on the length of use, pressure range, temperature of the medium and detergent used. They are to be determined on an individual basis during trial operation. It is the operator's responsibility to keep to the maintenance intervals.

Maintenance should be carried out approximately every 300 hours of operation and all seals should be replaced.

The ball bearings must be replaced by original bearings after 2000 operating hours at the latest.

Components



Scope of delivery

Scope of delivery MixerWasher complete with connection terminal without connection cable

Accessories

Accessories www.moog.ch
 Contact Sales +41 31 838 19 19
info@moog.ch



Spares

Spares www.moog.ch
 Contact Sales +41 31 838 19 19
info@moog.ch



Documentation

- Further documentation**
- Operating instructions
 - Certificates
 - Declaration

